



# Belonging & Community

**Presenting a Collection of Unique Artistic Perspectives from Across Canada:**  
Celebrating the Creative Expressions of Artists with Intellectual Disabilities





**Brick in the Wall (detail) | Gordon Goose**

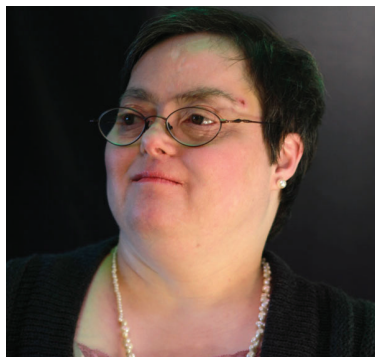
*Acrylic on wood, 2016*

Gordie was born in Cape Breton, Nova Scotia, and now calls Halifax his home. His art is reflective of the clarity and simplicity with which he chooses to live his life. He enjoys books, being outdoors, spending time with others and starting his day with a good cup of coffee. A faithful friend, he is happiest in the company of those he knows best. Gordie's heart is always open to new people.





**"The piece was created with a marble! I put a frame around a piece of paper and slid a marble dipped in paint into the middle of the frame."**



**Untitled (detail) | Céline Pinel**  
*Watercolor, 2014*

Céline Pinel is the youngest in a family of 15 children and has been a member of the L'Arche L'Étoile community since October of 1991. It was thanks to Céline's inspiration that we opened our Day Centre in 2004. As Céline put it, she wanted to work so she could "earn money." With her joyful spirit, Céline radiates a deep love of life and humour. Everyone loves to be in her presence and company. She is loyal in all her relationships, and never forgets anyone. Nobody forgets her either. She is an extremely memorable and endearing woman.



# About L'Arche Canada

**We are the Canadian arm of the international L'Arche Movement.**

L'Arche Canada is a national non-profit with 30 member L'Arche communities in nine provinces from Newfoundland to Vancouver Island.

*The Mission of L'Arche is to make known the gifts of people with intellectual disabilities, revealed through mutually transforming relationships and engage in our diverse cultures, working together toward a more human society.*



## **We Foster a Vibrant Community**

We share an extraordinary life in community of welcome, celebration, traditions, togetherness and belonging.



## **We Celebrate the Value of Each Person**

We appreciate each person for their unique way of being; we listen to and respect each person's wishes and preferences.



## **Nurturing of our Gifts and Growth**

We support one another's growth and gifts and create a safe and trusting environment.



## **Journey Together With Respect**

We care how our actions affect others. We help one another and build positive, supportive relationships.



## **Your Donations Make a Difference**

The L'Arche Canada Foundation is the major funding source for the national structure that supports all L'Arche communities across the country through human resource management systems, the recruitment of assistants, leadership development programs for people with and without disabilities, internal and external communications, collaboration with national partners, and advocacy at the national level.

With your help, we can build a more compassionate, more human society. Make a donation today at: **larche.ca** or by scanning the **QR code**.







**"COLOUR,  
COLOUR,  
SEE!"**



**COLOUR, SEE** | Harry Clifford Larocque  
*Acrylic on canvas, 2017*

Harry has been a L'Arche Ottawa member for 40 years. He enjoys painting in his free time, in his small studio located in the basement of the home that he lives in - called La Source, the Source. Harry works in a paper shredding and recycling workshop, and his hobbies include painting, puzzles, watching Family Feud and collaging on his tablet.





**"This painting is  
really like Vancouver!  
Grey skies and bright  
flowers!"**



**Sunflowers (detail) | Melina Boote**

*Acrylic on canvas, 2017*

Melina Boote is a long-time member of the L'Arche community in Vancouver. She lives in Emily House and attends the Emmaus day program. She is an avid painter and loves all kinds of crafts and doing puzzles in her free time. Melina enjoys a cup of tea when she is doing her art, but make sure you put the milk, sweetener, and tea bag in her cup THEN the hot water. "It really does taste better!"





*Larche.ca*  
*info@larche.ca*

Toll Free (1800) 571.0212

3958, rue Dandurand,  
Montréal  
Quebec CANADA  
H1X 1P7

**Copyright of participating artists**

*Each artist owns and retains the copyright of the image of their artwork. By participating in the L'Arche Canada On-Line Art Exhibition, they have agreed to and permit the sole use of that image within the context of the L'Arche Canada On-Line Art Exhibition; and agree and permit that image use by those within L'Arche Canada for purposes of internal use, local shows, advertising, and fundraising. For use outside of the L'Arche Canada On-Line Art Exhibition and the L'Arche Canada copyright, permission will have to be negotiated with the artist directly.*

**Sale of the artworks:**

Inquiries are directed to the local community website posted with each painting.